



WeCareCMH

THIS IS FOR
ALL OF US.

Report to Our Community



OUR MISSION

Raising funds and creating friends for Cambridge Memorial Hospital to provide exceptional healthcare to our community.

OUR VISION

Exceptional Healthcare
by Exceptional People.



WHAT A YEAR IT HAS BEEN!

**It is our pleasure to report
to you on the work of
Cambridge Memorial Hospital
Foundation (CMHF) over
the past year (2017-2018).**

These pages tell the stories of the support of our community and our collective efforts to place the best tools possible in the hands of our doctors, nurses and allied health staff. It shares inspiring stories of amazing volunteers, dedicated staff and thoughtful donors and this is our opportunity to celebrate how much you and the entire community has rallied around our hospital.

In our report last year, we announced the need to raise \$10 million for our campaign to equip the new wing. This year, with the help of so many volunteers and donors, we are pleased to report that at the time of printing an additional \$4.6 million dollars in cash and pledges has been raised. Thank you for your generous support of Cambridge Memorial Hospital Foundation. Each donation – large and small – brings us closer to our goal.

Our job at the Foundation is to inspire our community and help provide the very best in healthcare for our families, friends and neighbours. In the coming years, the demands for the latest technology and equipment will continue to grow. Raising funds for our hospital is our mandate and our passion. We want you to know we are up for the challenge.

We are grateful to each of you for thinking of your hospital and more importantly, for taking the time to reach out and make an investment. Thank you for believing in the importance of supporting the health of your community and for being a vital part of our network of support.

Sincerely,

Angelo Loberto

Lisa Short

2017-2018 Foundation Board of Directors

Dr. Iqbal Biswas

Katherine Cressman

Victoria Clark

Patrick Gaskin
Hospital President & CEO

Brian Law

Angelo Loberto
Chair

Ian Miles
Hospital Appointee

Cliff Rego

Surekha Shenoy
Past Chair

Connie Titizian

David Thomas
Treasurer

Gerry Walsh
Secretary

Kevin Zimic
Vice Chair

Incoming Board Members
2018-2019

James Goodram

Cheryl Hugill

Yasmine Mohamed

**Thank you
for your
commitment
to our
Hospital.**



WeCareCMH

Introducing WeCareCMH Campaign Cabinet & Ambassadors

**The WeCareCMH Campaign Cabinet and
Ambassador Team is hard at work in your
community, inspiring donations to CMH.**

Front row: Angelo Loberto, Ian Miles, Victoria Clark, Sally Doersam, Surekha Shenoy.

Second row: Greg Durocher, Mike Collins, Scott Higgins, Hameed Mohammed,
Don McIntyre, Cliff Rego, Kate Cressman, Mayor Doug Craig, Julie Walker,
Connie Titizian, Naseem Mian, Heather Hurst, Kevin Zimic.

Third row: Kathy Wilson, Bob Cunningham, Jody Schnarr, John Bell, Dave Thomas,
Jennifer Taylor, Karen Willson, Dr. Winnie Lee, Jennifer Voss.

Back row: Lisa Short, Sue Lockett, John MacQuarrie, Wes Gee, Scott Walker,
John Pollock, Patrick Gaskin, Gary Hauser, Mike Doersam, Mike Titizian.

Absent from photo: Mary Beaton, Dr. Iqbal Biswas, Larry Brokenshire, Brian Law,
Dr. Mike Lawrie, Sue Lee, Jonathan MacNaughton, Alam Mohammad, Dr. Kunuk Rhee,
Robert J. Sanders, Peter Voss, Gerry Walsh.



Honourary Patrons

Mayor Doug Craig
John Pollock

Co-Chairs

Cliff Rego
Kevin Zimic

Cabinet Members

Mike Collins
Greg Durocher
Patrick Gaskin
James Goodram
Andy Incitti
Dr. Winnie Lee
Angelo Loberto
Surekha Shenoy

Ambassadors

Dr. George Bal
Dr. Sharon K. Bal
Mary Beaton
John Bell
Dr. Iqbal Biswas
Larry Brokenshire
Victoria Clark
Kate Cressman
Bob Cunningham
Mike Doersam
Don Fanstone
Carl Furtado
Gary Hauser
Scott Higgins
Dr. Mike Lawrie
Brian Law

Sue Lee

Jonathan McNaughton
John MacQuarrie
Manuel Martins
Naseem Mian
Ian Miles
Alam Mohammed
Dr. Kunuk Rhee
Jon Rohr
Jody Schnarr
Robert J. Sanders
Jennifer Taylor
David Thomas
Connie Titizian
Mike Titizian
Peter Voss
Gerry Walsh



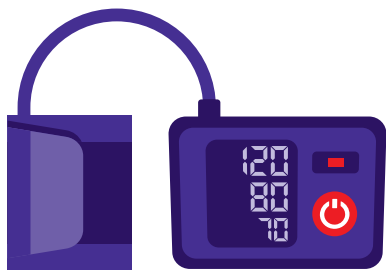
AT THE WECARE PUBLIC LAUNCH ON FEBRUARY 5, 2018, CMHF WAS HONOURED TO ANNOUNCE A \$1,000,000 GIFT FROM ROBERT (BOB) CUNNINGHAM.

Bob is a long-time resident, businessman, coach, mentor, volunteer and friend. As the excited crowd learned of Bob's gift, he was welcomed to the stage with a standing ovation. Bob spoke to a packed house and inspired us all when he said "if everyone volunteers a little and gives a little, think about how much the hospital can do for you when you need it most".

Bob has been involved with CMH for over 15 years in various roles serving on the Governing Board of the Hospital and Foundation Board of Directors. Bob serves on the Finance Committee and continues to raise much needed funds for equipment to enrich patient care.

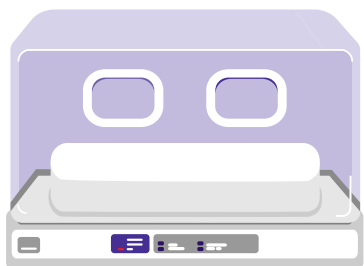
We are grateful for Bob's investment and for all that he has done and continues to do for CMH. Thank you Bob!

YOUR GENEROUS DONATIONS
HAVE HELPED US FUND:



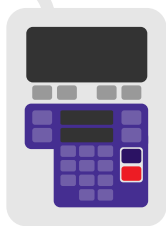
\$5,555

BP Monitors



\$29,073

Infant Incubators



\$7,045

IV Infusion Pumps

...AND SO MUCH MORE.
THANK YOU.

FINANCIAL
SNAPSHOT

LEGEND:
2017-2018 | 2016-2017

ANNUAL GIVING

\$638,519

\$666,017

LEGACY GIFTS

\$458,650

\$422,707

MAJOR GIFTS

\$2,305,719

\$1,294,727

SPECIAL EVENTS

\$598,747

\$566,060

TOTAL REVENUE

\$4,001,635

\$2,949,511

TOTAL EXPENSES

\$1,379,298

\$1,191,409



Did you know that community dollars fund 100% of the equipment in our hospital?

Your generous donations have allowed us to purchase the following upgraded equipment for our new wing.

Patient Lifts

Patient dignity and staff safety are vital to the best patient care. Portable lifts can be awkward and noisy. Motorized patient lifts have been installed in the Emergency Department stretcher bays, and all inpatient rooms. In most rooms, the lifts extend from the bed to the washroom doors and can accommodate up to 350lbs. In enhanced bariatric rooms, the lifts extend right into the washroom and can safely move someone up to 600lbs.

High Tech “Next Generation Surgical Lighting”

Our surgeons perform such delicate laparoscopic procedures that require the best lighting possible. Our new surgical suites have smart lighting that uses wireless technology. Clinicians can use a tablet or command centre to make adjustments to the lights. These specialized, easy to position lights can even sense an object casting shadow on a patient (like a surgeons shoulder) shutting off several LED lights to eliminate the shadow. Centre handles also accommodate a camera so procedures can be recorded for teaching or patient records. Like all technology in the new surgical suites, these are adaptable to healthcare professionals' height and standing placement.

Clean Air System

Fresh, sterile air is essential to reduce and eliminate possible infection. Each new surgical suite contains Hospital Operating Room Diffusers (HORD) systems, acting as a curtain of air around the patient and creating a pocket of negative pressure. Negative pressure pushes the air inside the curtain out, making certain the cleanest air possible surrounds the patient at all times. All air within the suite is controlled by a dedicated air handler for each of our surgical suites.

Hanging Booms (ICU)

All our Intensive Care Unit (ICU) rooms are equipped with two, lifesaving booms. The respiratory therapy boom contains hook-ups for gases and vents providing a respiratory therapist with all the necessary equipment to treat patients. The nursing boom also has medical equipment built in, including a secure drawer for medicine. Each boom can easily adjust to the height of the care provider. Both remove the equipment that normally surrounds a bed, allowing the healthcare team to access the patient quickly and safely.



DOCTOR SPOTLIGHT DR. GEDDES

Thirty-eight years a surgeon, sixty-four thousand patients treated and one awesome career.

In December 2016, Dr. Scott Geddes retired – well sort of. Dr. Geddes first came to Cambridge Memorial Hospital in 1979 and chose our hospital over many others because he loved the city and wanted to work close to family. Although interested in all aspects of surgery, Dr. Geddes found his passion in general surgery. It was a field in which he thought he could provide the best possible care for the most people.

Quickly integrating himself within the CMH family Dr. Geddes became a tireless champion for our Foundation. When asked what motivated him, he responded,

The Foundation is very important for the hospital. We get money from the government for salaries, bricks, and mortar, but as surgeons, the funding we get for the equipment we use comes from our community. It's important to give back, and I chose to help raise funds so that we can provide the best care possible to our patients.

Retirement brought a whole new set of fun activities for Dr. Geddes, like spending more time with family, going to the cottage and getting on his bike for long trips. Six months into his well-deserved retirement, he found himself missing the bustle of surgery and helping people. So, he recently stepped back into the operating room as an assistant and continued his role as an assessor for the College of Physicians and Surgeons of Ontario. He also maintained his carpal tunnel clinic at the hospital. In addition to all of this, he decided to accept an opportunity to cover a six-month leave in general surgery. As Dr. Geddes says, “I guess I haven't yet completely retired.”

The hottest pop-up charity event in town!

The anticipation for the opening
of our new wing is drawing
excitement from our community
and the staff here at the hospital.

The new expansion will be a game changer for
our community, providing our families, friends and
neighbours with top notch facilities, matched only
by the talent, compassion and care within its walls.

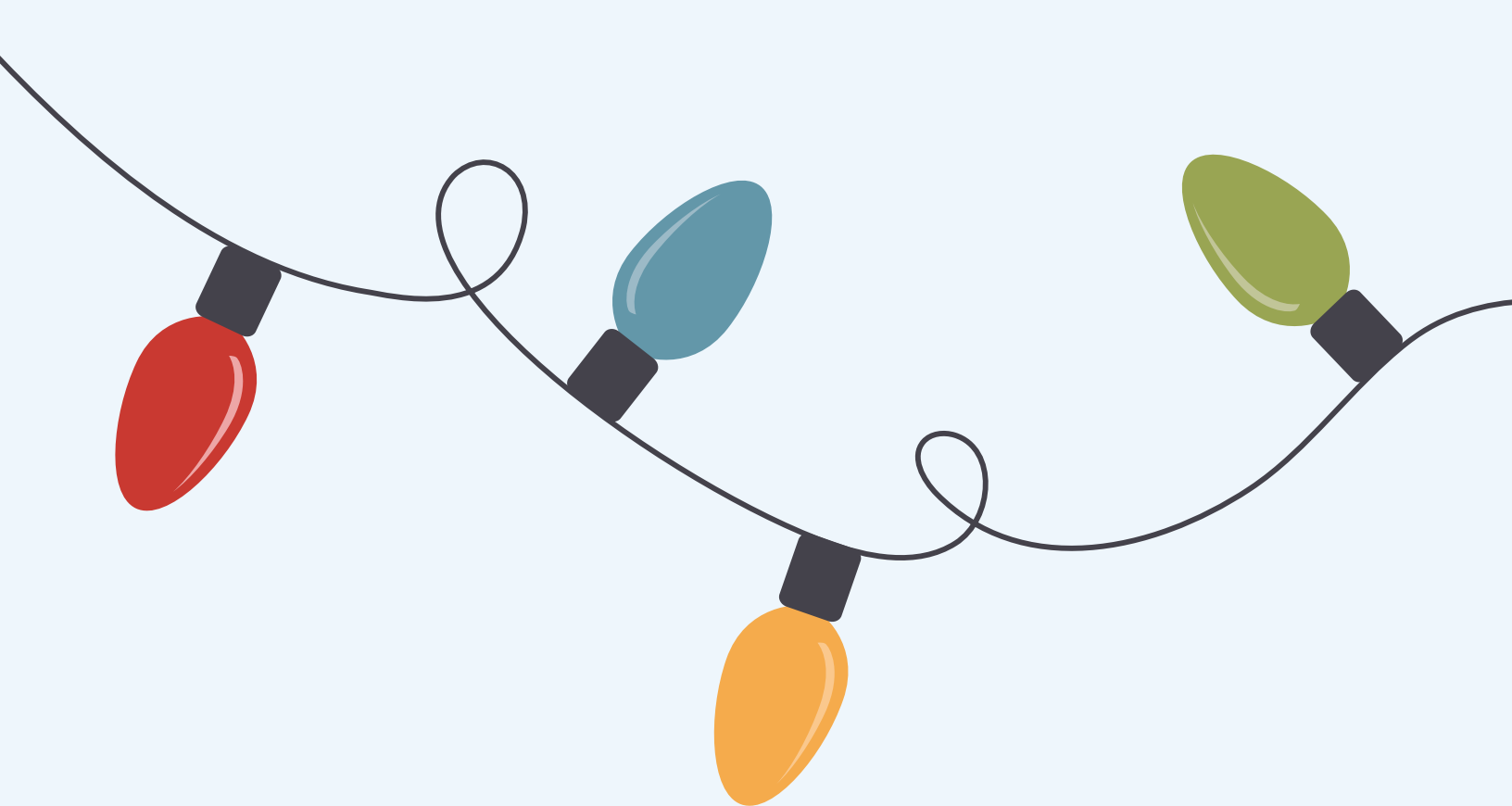
The wait will be worth it and we want you to
celebrate with us at a fundraiser like no other.

Prepare yourself for what will be the social event
of the year; a formal affair in the new wing of
Cambridge Memorial Hospital that will attract
people who understand that healthcare is the
foundation of a thriving community.

The date for CMHReveal will be scheduled in
advance of the public opening of the new wing
and 200 tickets are available at \$250 per person.
VIP tours included.

For more information about CMHReveal
or to purchase your tickets, please visit:
www.cmhfoundation.ca/events





Celebrates 29 Years

Over 2,000 community donors, associations and businesses expressed their generosity with gifts to the Cambridge Memorial Hospital Foundation's Trees of Caring campaign this season.

Over \$235,000 was raised through the incredible generosity of our community. These funds will be used to purchase new medical equipment for the Women and Children's Department such as infant warmers, ventilators and high resolution ultrasound machines, fetal monitors and a blood warming machine.



TREES OF CARING COMMUNITY KICK OFF

Our annual Trees of Caring campaign was launched in November at Chartwell Queen's Square Retirement Residence.

In addition to 'tree light' donations, three stars shone brightly on the Trees of Caring. This year's Gold Star was sponsored by Faisal Susiwala. Faisal made a generous donation of \$130,000 that is one dollar on behalf of each Cambridge resident!

The Silver Star was sponsored by former CMHF Board member Bob Cunningham and the Bronze Star was lit with a gift from the Royal Canadian Legion Ladies Auxiliary Branch 272, who have sponsored this star since 2003.

This is the eighth year that the hospital's Trees of Caring has included a Coronation Boulevard corporate banner program. Eleven businesses and organizations donated a total of \$5,500 to the overall Trees of Caring goal, a tremendous part of this year's campaign!

Once again, Cambridge Toyota honoured each client who purchased a vehicle throughout November and December with a \$25 donation to Trees of Caring.

Returning partners are so integral to the hospital's ability to meet their ongoing equipment needs.

Another vital part of the Trees of Caring Campaign is the Angels of Caring. All Through the House crafts the Angels and helps to coordinate the program. This year's design was very popular, and was available for purchase in eleven locations across Cambridge and North Dumfries including local TD and BMO branches, Langdon Hall and the CMH Gift Shop.

In 30 years, over 36,000 Angels have been sold to raise more than \$100,000 for Cambridge Memorial Hospital.

This year Angels can be purchased through the Cambridge Memorial Hospital Volunteer Association.

PATIENT STORY



CMH WAS HERE WHEN THE PERVAIZ FAMILY NEEDED US MOST

Baby Azlaan arrived at CMH by ambulance. His parents called 911 when he stopped moving and within minutes he started seizing. As first time parents, they were completely panicked and had no idea what was going on.

The paramedics arrived at their home very quickly and explained that Azlaan had experienced a febrile seizure. After arriving at Cambridge Memorial Hospital the Pervaizi family was quickly seen by a doctor and sent to Diagnostic Imaging to determine the cause. After a series of tests and monitoring Azlaan was cleared to go home.

“The paramedics, doctors, nurses and everyone we dealt with that night handled us with such kindness, care and understanding. We are so grateful to have had such a wonderful experience in such a scary situation. To receive gentle and empathetic support from strangers was absolutely amazing” said Chantel Pervaiz.

Azlaan is a happy, healthy and thriving 17-month old who keeps his family very busy.



DOCTOR SPOTLIGHT DR. CHANG

What makes Dr. Michelle Chang unique?

Is it the U2 video she was in? Is it her reason for becoming a doctor? Is it because she is the only female Urologist in the Waterloo-Wellington LHIN?

It really isn't just one thing, for Dr. Chang is one of a kind — to us, her patients and to her family. She is the first doctor in her family, so it was a career choice that her family respected and encouraged. She chose to study medicine because it offered her the balance and personal satisfaction between having to solve complex challenges and being able to help people.

When she started medical school, Dr. Chang was instantly attracted to surgery, but did not realize there were so many different specialties. When her father was diagnosed with bladder cancer and passed away, she found her passion in Urology.

When Dr. Chang is not in the operating room or with her patients, you can find her with her family, camping, spending time outdoors and listening to music.

Oh, and that U2 video? City of Blinding Lights.



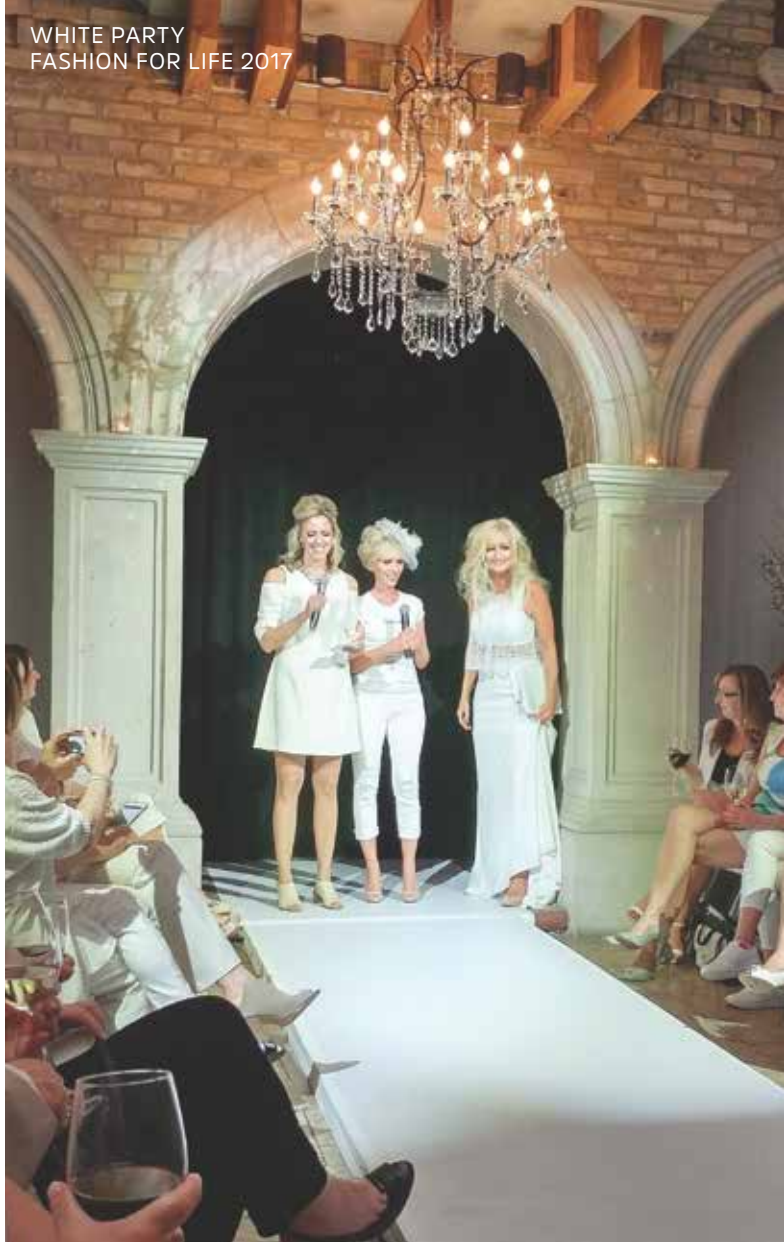
BEST BITES 2017



AMIGAS GROUP 2018



AMIGAS GROUP 2018



WHITE PARTY
FASHION FOR LIFE 2017



SPRING GOLF
TOURNAMENT 2017



WeCareCMH
**DIVERSITY
DINNER**

DIVERSITY DINNER EVENT WELCOMES OVER 27 CULTURAL ORGANIZATIONS

On April 17th, the Armenian Community Centre hosted our 12th Annual Diversity Dinner, welcoming over 27 cultural organizations. This special night highlighted the efforts of many multi-cultural groups with an important mission in common — championing their hospital. Guests had the pleasure of hearing from Dr. Anil Maheshwari, Chief of Family Medicine. He spoke about the efforts being made to increase communication between family doctors and the hospital and how these improvements will better support patient care at CMH.



BEST BITES WOWS GUESTS IN SUPPORT OF A NEW CT SCANNER

Best Bites — a Taste of the Region, jointly presented by RBC Wealth Management and MNP LLP, offered guests a complete selection of gourmet food and beverage, with live entertainment and a great auction. Last year's celebration of the 'Past, Present and Future of CMH' raised over \$78,000 in support of the CT Scanner and Rotary community projects. A team of dedicated volunteers and committed sponsors made this event a success!

For over a decade Cambridge Memorial Hospital Foundation and Rotary Club Preston-Hespeler have partnered to host this unique fundraiser showcasing local chefs and delicious beverages.



THANK YOU TO OUR 20TH ANNUAL SPRING GOLF CLASSIC PARTICIPANTS

Since 1997, the Spring Golf Classic has raised more than \$1.3 million for Cambridge Memorial Hospital. Fundraising events are integral to helping Cambridge Memorial Hospital Foundation raise funds and awareness of the hospital expansion and the need for patient equipment.

This year's tournament was held at the Galt Country Club and proceeds will purchase essential life-saving equipment for our surgical team.



THE CERMAK FAMILY HONOURING THEIR DAUGHTER'S LEGACY

Often individuals choose to name a room after a loved one. For the Cermak Family finding ways to honour their daughter Naomi has been a source of joy.

"Although Naomi's time here on earth was short, she made an impact on her friends and in the scientific community. She was a post-doctoral fellow at the University of Maastricht in the Netherlands and won the Young Investigators Award at the European College of Sports Science in 2011 for her beet root juice presentation. Naomi was to be a keynote speaker in Barcelona the following year but became ill at this time.

She had given presentations in Europe and North America and was on her way to creating her niche in research. For her legacy to live on there has been a Memorial Scholarship set up at Brock University, the University of Maastricht and at McMaster University. Now we would like to remember her by naming a room in our local hospital. She is always with us and we hope in the future others will remember her for what she accomplished and for the wonderful person she was as a daughter, sister, friend, scholar and athlete."

It was a pleasure for us to help the Cermaks fulfill their vision in honour of Naomi.



THE ASHENHURST SCHOLARSHIP – SUPPORTING COPD CARE

Often donors and patients are the inspiration behind new opportunities in healthcare – from discovering new ways to serve our patients to new learning opportunities for staff. The Ashenhurst Scholarship was initiated by a gift from Barb and Peter Ashenhurst with the vision of supporting the learning of a current CMH employee, with an interest in improving care for COPD (chronic obstructive pulmonary disease) patients.

Mrs. Ashenhurst credits Dr. Christine Macie and her team at the Respirology Clinic for being a great resource and support to her in recent years. So much is still being discovered about COPD, which actually affects over 4% of the adult population. Her hope is that providing funds for further training in this area will inspire learning across departments to further assist COPD patients accessing medical services at CMH.

A further portion of the Ashenhurst's gift has funded essential respirology equipment for patients. Barb and Peter's generosity will also be recognized with a patient room in the future Rehabilitation Department.



ROBERT H. (BOB) MCCLURKIN GIVING BACK

You could say that giving back is in Bob McClurkin's blood.

Bob has lived in Cambridge since he was six years old, went on to become an OPP officer and is now retired from the force. He started giving to Cambridge Memorial Hospital over 20 years ago and proudly reports that he has donated blood 161 times in his lifetime.

Not long ago, Bob required surgery and spent some time under the watchful eye of the nurses and doctors in our surgical unit. Bob's gratitude for the care he received prompted him to look for yet another way to give back. When he learned of the Buy a Room Program in support of Cambridge Memorial Hospital, he didn't hesitate to make a donation to name a room on the Surgical floor to show his appreciation.



RITA WESTBROOK SUPPORTING HER COMMUNITY

Rita Westbrook has spent her entire life dedicated to the service of others. Raised in a family that immigrated from Europe after the war, her family knew hardship. Rita witnessed firsthand the way her parents cared for others and welcomed them into their home to share what very little they had.

It was from these humble beginnings that service to her community evolved naturally. Rita served with the Waterloo Regional Police Service for over 35 years and retired as a Superintendent. She spent many years volunteering on boards throughout our community, including the Cambridge Memorial Hospital Board (2011–2016) and currently on the WWLHIN Board. When asked about her years of service, Rita replies "Giving back has always felt like the right thing to do."

Rita feels strongly that the hospital represents an important part of a thriving community. She states "our hospital is always going to be there for us; but in order for it to be there for us with the very best, we have to support it".

Rita has been giving to CMH for many years. After the loss of her husband in 2017, Rita decided to name a room in the new wing of the hospital in his honour. When asked about why she gives, Rita points out all that she is grateful for including a good life and a rewarding career. She believes you have to give something back when you have been given so much.

CaringFAMILY



Join a distinguished group of Caring Families by investing \$100,000 in the WeCareCMH Campaign and stand alongside other families showing their commitment to the importance of healthcare to our community.

Seen by thousands of people each year, your gift will be recognized on our Caring Family Wall in the Emergency Waiting Area and will serve to inspire other families for years to come.

MONICA LOBERTO SPEAKS ABOUT WHY GIVING BACK IS IMPORTANT

Both our daughters were born at Cambridge Memorial Hospital and we have visited the Emergency Department several times throughout the years. Each time, we have been impressed with the compassion and expertise the staff demonstrated while treating us.

Giving back to the community is important to us and the hospital is the one institution that every Cambridge resident will eventually benefit from, whether for themselves or for a loved one.

Becoming a Caring Family was a way for us to help our community directly. We all need a local hospital with the best resources available for those in the community facing a health crisis. Through Angelo's work on both the CMH and the CMHF Boards, and my involvement as a CMH Volunteer, we learned that the community is 100% responsible for funding all equipment requirements and therefore our donations would be used to specifically benefit our hospital.

Through our volunteer work at the hospital we can see the direct result of our contributions. There is a new building under construction, there are new patient rooms being created and there is new equipment being purchased. When we speak to our children about giving back, we can point to these advancements and show our girls how giving helps the community at large.

Inspired by our example, we are thrilled that we are now seeing our daughters also involved with charitable giving by leading fundraising school activities and requesting donations for CMH in lieu of birthday presents.

CaringFamilies

Anonymous	Lorne & Kelli Wallace
Patrick Gaskin & Fiona Main	Smith Family (Gordon, Beth Marie, Mariah, Samantha & Deanna)
Takacs Family	Anonymous – <i>In Honour of Dr. Rhee</i>
Angelo & Monica Loberto	NR Murphy Family Foundation
Don & Tim McIntyre	Lee Taggart & Family
Peter & Linda Van Der Heyden	DH Falle Family Foundation
Anonymous	James & Sharon Hutton and Family
Doug Mitten	

CaringBUSINESS



Join our growing list of Caring Businesses who are each inspired to contribute a minimum of \$50,000 to the WeCareCMH Campaign. Your business will be distinctly identified as a leader in our community to all who visit CMH.

Successful business is driven by passion, vision and reputation. Our Caring Businesses are leading the way in their respective industries by embracing their social responsibility with a gift to support our healthcare transformation. Our Atrium Recognition Wall will celebrate your vision for a healthier community.

SPOTLIGHT ON CARING BUSINESS

Ridgehill Ford's philanthropic relationship with CMH was kicked into high gear eight years ago when Kevin Zimic purchased the prominent dealership on Hespeler Road. As a previous member of the St. Catharines General Hospital Foundation Board Executive, Kevin understood the colossal task of raising funds to build and equip a new hospital. His engagement with CMH started light, as he was still getting settled into the Cambridge business landscape and looking for a home for his family.

Ridgehill first supported the Foundation with a test drive event in 2012 and followed it up by sponsoring a corporate banner for Trees of Caring. In the years since, Trees of Caring has become an ongoing commitment; the dealership has become a significant sponsor of our Golf Classic, and participated in Best Bites and community dinners.

Once Kevin re-located his family to Cambridge, he felt he could finally direct more of his passion and

energy to the hospital. He is now "all in" and serving as both the CMH Foundation Board Vice-Chair and the WeCareCMH Co-Chair. He strongly believes it is Cambridge's time for a right-sized, state-of-the-art hospital. That's what he wants available for his family, his employees, and every one of his clients.

It was important to Kevin that he gives a financial donation in addition to volunteering his time and talent. He knew that successful campaign leaders give first, before they approach others. He chose to become a Caring Business donor, giving a \$50,000 pledge spread over 3-5 years.

Ridgehill Ford is not the only auto dealer to contribute to the campaign, as the Bennett family has also made a significant commitment as a Caring Family, and Cambridge Toyota continues their loyalty to our Trees of Caring Campaign. Each of these gifts impact the care we are able to provide for our patients when they need us most.

CaringBusinesses

BWXT Canada Ltd.

Dumfries Mutual Insurance Company

Bondfield Construction Company Ltd.

Energy+ Inc.

Brewers Car Parts Plus

Graham Mathew Chartered Professional Accountants

Brian Domm Farms Ltd.

Lone Wolf Real Estate Technologies

CHYM 96.7

Network Sewer & Watermain

Cambridge Chamber of Commerce

Ridgehill Ford Sales Ltd.

Cambridge Tim Horton Owners

Shimco

Corbett & Lounsbury Funeral Homes

Warren, Teri & David Vincent

PATIENT STORY



UNFORGETTABLE EXPERIENCE WITH THE C-SECTION AND DELIVERY UNIT

This past year, over 1,400 babies were born at CMH! The stories of the families passing through our Women and Children's Department are unique and special and the experience is part of a life changing moment for a family.

As first time parents, Kyle and Isabel Skilliter weren't quite sure what to expect the day they came to Cambridge Memorial Hospital to deliver their baby. When a C-Section was required, they were guided every step of the way by the team of doctors, nurses and support staff at CMH. Before too long, an uncertain time turned into a beautiful moment of celebration as they brought baby Naiara into the world. When Kyle and Isabel look back on their experience at Cambridge Memorial it is with gratitude and love for the care they received.

"It's not too often that you feel sad to be discharged from the hospital. The staff made us feel right at home and well taken care of. They were polite, understanding, patient and most importantly informative." Kyle and Isabel Skilliter

LEGACY GIFT

Thank you to the following individuals who through their estate have ensured that the Cambridge Memorial Hospital will be able to provide exceptional healthcare by exceptional people.

Carrie Peck
Robert A. Cowan
Anne-Marie Reeve
Louise Adele Reeve
Hendrikus (Henry) Coobs
Anne-Marie Schott
Larry Cecil Hickson
Norman James Wainman

For additional information about including the hospital in your Will contact us at 519-740-4966

VITAL STATS



5,052
Donors



20,420
Gifts



457
Volunteers



1,134
Dedicated Employees

In memory gifts were given in honour of the following people this year:

Allatt, Robert
Bardwell, George J.
Blaikley, Jessie
Blumenthal, Karl
Budra, Al
Bullen, Lennis
Burnes, Eileen L.
Buttigieg, Joe
Carlton, Edward
Chaves, Guilherme
Corriveau, Hugette
Coutts, Linda
Cromwell, Doris
Da Silva, Yvonne
Darke, Ross A.
Dasilva, Francisco
Delahunty John R.
DeRoche, James
Dobranski, Shirley
Doige, Anita
Dredery, Archy
Duckworth, Gregory J.

Edmonson, Dorothy
Figueiredo, Peter
Ford, Larry
Gaetan, Angelo
Generoux, Troy
Gibson, Sallie
Glover, Robert E.
Gower, Linda
Green, Edna
Gulliver, Gerry
Gunther, Marie
Hanna, Linda
Ignaciuk, John
Janes, Cecil
Kenny, Jean
Lantz, William J.
Laurence, Jean
Leclerc, Lorraine
Light, Marion
MacDonald, Bryan
Macintosh, Anne
McCloy, Linda
McGregor, Betty
Melo, Georgina
Melo, Maira
Morrell, Nigel

Myskiw, Brian J.
Nordelo, Maria
Noseworthy, Robert
Olesen, Carl
Parkin, Joyce
Psenak, Helen
Reich, Stella
Schnider, Ruth
Scrimmes, Anne
Seibert, Thomas M.
Shenoy, Satyanarayana M.
Shepherd, Gwen
Solonik, Douglas R.
Sovari, Emma
Szentimrey, Doris
Szollosi, George
Topping, Norah
Trihenia, George
Tzekas, Vasse
Wakefield, Alan
Walker, Leslie
Watson, William
Westbrook, John
Whitfield, Alma
Whitfield, Dorothy
Wood, Richard M.

Special occasion and celebration gifts were given in honour of the following people this year:

Jose Aguiar
Jose and Evangelina Aguiar's 50th Wedding Anniversary
Jose Chaves
Jose and Maria Chave's 65th Wedding Anniversary
Murray Garlick
Murray and Susan Garlick's 50th Wedding Anniversary
Paul Viveiros
Richard Hyde
Rick and Fran Hyde's Wedding
Robert Hodges
Robert and Gail Hodge's 50th Wedding Anniversary

SERVING OUR COMMUNITY



10,852

Overnight visits of one
night or more



106,912

Diagnostic
images taken



1,405

Babies born



21,351

Outpatient Mental
Health visits, 604
inpatient stays



242

Rehabilitation
Unit visits



52,024

Emergency
Room visits

THANK YOU

Our greatest strength is the support we receive from this community. Donations to the Foundation help to build a healthier community through the purchase of much needed medical equipment.

The following are those who have given gifts of \$250 or more this past fiscal year:

658039 Ontario Inc.
1753927 Ontario Inc.
828421 Ontario Inc.
A.F. "Sandy" Forbes,
Insurance Broker
Abelson, Shirley
Abraham, Isabella
Abundance Canada

Achmann, Albert & Ursula
Advance Biomedical Service
Aecon Group Inc.
African Lion Safari
Agnew Peckham
& Associates Ltd.
Aguiar, Jose & Evangelina
Air Power Products Ltd.
Airi, Amit & Asha
Alexander, John
Amico Corporation
Amigas
Anderson, Elaine

Anderton, Ken & Audrey
Animal Hospital of Cambridge
Ansah, Anthony
Antcliffe, Allan &
Margot McCurry
Argo, Kirk & Lori
Armenian Prelacy
of Canada Inc.
Armstrong, Glen & Barb
Armstrong, Paul
Ash, Helen
Astro-Tech System Solutions

Ayr Farmers Financial
Services Inc.
Ayr Farmers Mutual
Insurance Company
Bailey, Louise
Baird, James & Karen
Bairos, Tony & Helga
Banda Lira de Fatima
Comunidade Portuguesa
Banks, Lara & Frania
Banz, Lavonne
Barbar-An Royson Inc.
Barber, Clare

Barefoot, Liane	Cambridge & North Dumfries	Clemens, Rodger C.	Dixon Charitable Foundation
Barlow, William	Community Foundation	Cleveland, Kimberley	Doerfling, Marg
Barrie, George & Gwen	Cambridge Aggregate	Armstrong, Jim &	Dominas, Jocelyne
Barrie, Sandy	Services Inc.	Suzanne Cline-Armstrong	Donkers Millwrighting
Bartholomew-Saunders, Doug- las & Michael	Cambridge Aggregates Inc.	CMA Realty Ltd.	Services, Inc.
Batista, Dave	Cambridge Brass	CMR Law Office	Donovan, Peter
Bearing Bronze Ltd.	Cambridge Centre Honda	Coates, Beverley	Douglas, Jill
Beaton, Alasdair & Judith	Cambridge Chamber	Cody, Paul	Douwes, Peter & Joyce
Beaver, Eugene	of Commerce	Cole, Debbie	Doyle, Agnes
Beaver, Robert & Carol	Cambridge Fitness	Cole, Joan	Drake, Reese
Bechtel, Linda	& Wellness Centre	Collins-Wright, Robert	DriverCheck Inc.
Beck, John & Lori	Cambridge Harriers	& Lavonne	Drury, Ed & Ruth
Beer, David	Cambridge Highlands	Collison, Jim & Charlotte	Dunbar, Moira
Bennett Chevrolet Cadillac Ltd.	Lions Club	Colson Casters Ltd.	Duncan, John & Barb
Berg, David & Bonnie	Cambridge Insurance Brokers	Conestoga College Institute of	Dunnill, Helen
Bhaiyat, Sohail	(Preston) Ltd.	Tech. & Advanced Learning	Durnan, David & Karen
Bickle, Joan	Cambridge Lodge #188-IOOF	Conestoga Insurance	Dusick, Rodney & Susan
Bienti, Joe	Cambridge Memorial Hospital	Brokers Ltd.	Duxbury, Paul & Kim
Bijowski, Paula	Volunteer Association	Connell, John & Norma	Dykema, Gerald
Biswas, Dr. Iqbal & Firdouse	Cambridge Mill	Cooke, Susan	Easton, Leslie
Blasman, John & Anne	Cambridge Muslim Society	Corbett Funeral Home Ltd.	Easton, Stewart
Blood, Kaelyn	Cambridge Shrine Club	Corporation of the	Ebb + Flow Creative
BMO Financial Group	Cambridge Tim Hortons	City of Cambridge	Education Credit Union Ltd.
Boland, Hugh & Betty	Owners	Costin, Dr. Ioana	Electro-Federation Canada Inc.
Bondfield Construction Co. Ltd.	Cambridge Toyota Inc.	Coulson, Tom	Elma Steel & Equipment Ltd.
Bosdale Farms Inc.	Cambridge Transmission	Coutts, Gordon & Audrey	Elmwood Contracting Inc.
Boughner, Douglas	Limited	Coutts, Wilfred & Joan	Embree & Co LLP
Bowers, Dale	Campbell, Mervyn & Judith	Creeden, Lynn	Energy + Inc.
Bowman, Shirley	Canada Tool Co. (Galt) Ltd.	Cressman, Reg & Katherine	Engel, Mary
Bowry, Vincent & Carmen	Canadian Tire	Cross, Larry & Glenna	Eptcon Ltd.
Bowry & Associates Inc.	Corporation Ltd.	Crowley, Terra	Equitable Life of Canada
Boyle, Bill	Canuck Compounders Inc.	Cunningham, Robert L.	Eramosa Physiotherapy
Bramhill, Percy & Rhoda	Caron, Claude & Evelyn	Czerkaski, Sophie	Associates-Hespeler
Brand, Carole	Carswell Partners	D5D Enterprises Limited	Erdelyi, Gabe
Brian Domm Farms Ltd.	Carter's Oshkosh	Dale, Jeff	Escobar, Jose & Maria
Brittenden, Wayne & Karen	Carvalho, Antonio & Maria	Dalton, Doris	Escobar, Maria
Brokenshire, Larry & Rosanne	Caswell, Roy	Daniel, Mary	Eugenio, Dr. Arthur
Brosseau, Francis & Joan Chan	Cedar Signs Inc.	Danson, Kristen	Evans, Nicole
Brown, Robert & Margaret	Cermak, Zdenek & Tineke	Dasilva, Alberto	Ewing, Murray & Kathleen
Brown, Sheryl	Chaves, Albert & Alicia	Davidson, Norman & Laura	Fairley, Dr. Robert & Joan
Broydell, Wallace & Grace	Chaves, David	Davis, Kim	Fairview Mennonite Homes
Bruman Construction	Chen, James & Grace	Davis, Robert & Colleen	The Falle Foundation
Brumley, Katie	Childs, Patricia	Davis, Ron & Nancy	Fanstone, Donald & Myra
Brunet, Katherine	CIBC Children's Foundation	De Zuleta, Maria	Farm Boy 2012 Inc.
Brunsdon, Elizabeth	CIBC Community Investment	DeBrusk, Howard & Margaret	Farm Mutual Reinsurance
Brunton, Bernice	Cisco Systems Canada Co.	Deemcque Investments Ltd.	Plan Inc.
Bryans, Edward	CJ's Express Plumbing	DeHaan, Joanne	Fashion for Life - White Party
Buchner, Ziggy & Judy	& Electrical Ltd.	Dell, Clifford & Shirley	Feasey, J. Keith & Kathryn
Buildcraft Leasing Inc.	Clail, Margaret	DeMars, Janice	Fennell, David & Joan
Bulla, Paul & Colleen	Clail, Peggy	Derle, Wolfgang	Ferguson, Terry & Danielle
BWXT Canada Ltd.	Claris International Corp	DeZURIK	Ferreira, John
Byrne, Mary Louise	Clark, Bonnie	Dick, Kathleen	Fidelity Investments
Calder, John	Clark, Edith	Dietrich, Dave	Canada Ltd.
	Clark, Gary & Victoria	Dimplex North America Ltd.	Fiuzza, Gilberto & Ricardina
	Clarkson, Colin	Dion, Roger & Denise	Fleischmann, Tony

Florence Nightingale Home Foundation	Gruber, Peter & Diane	Kozak, Harry & Cheryl Hugill	Kovats, William & Dianne
Fortner, Davis & Barbara	Gulenchyn, Dr. Karen	Hunter, Gordon & Janice	Krebsz, John & Marlene
Fox, Jim	Guns & Hose Custom Carpentry	Hunter, Jeff	Kroeger, Ken
Foxton, Sue & Brian	Habicher, Elaine	Hunter, Michael	Kron, Larry & Laurie
France, Harold	Hacking, Reta	Huron Alloys	Krull, Christine
Freitas, Kenny	Haines, Frank	Huron Creek Holdings Corp	Krupa, Kathy
French, Bonita	Hall, Donald	Hurst, Veronica	K-W Region Elks Lodge #578
Fried, Keith & Beverley	Hall, Marylou	Hutcheson, Gary & Denise	LaFontaine, Joyce
Fulton, Edna	Hallam, Peter	Hutton Forest Products	Lake, Wallace
Furco Electric Inc.	Hallink RSB	Hyde, Sherrill	Lam, Tony
Fuzion Fitness	Halliwell, Wendy	Hygate, Rex & Isobel	Langdown, Bill & Sheila
Galley, Roger	Hallman, Peter & Marjorie	Ingold Tree Service Inc.	Lanno, Denis
Galvao, Silvina	Hamilton, Jamie	Intell Academy Inc.	Larke, Dr. David
Gangar, Manjeet	Hammond, Meghan	Investors Group	Lavender, Anne
Garlick, Murray & Susan	Hammond, Nora	IODE Preston Chapter	Law, Brian & Mary
Gaskin, Cheryl	Hancey, Brian & Luanne	Irwin, Rachael	Law, Robert
Gaskin, Patrick & Fiona Main	Harrison, Barbara	J & B Variety	Lawrie, Dr. Michael & Louise
Geddes Medicine Professional Corporation	Hart, Anneke	Jackman, Alean	Leach, Michael
Geier, Paul	Hart, Le	Jackson, Doug	LeBrun, Tom & Barb
Gemmell, Robert	Harvey, Barb	Jaid Security Services	Leckie, Colleen
Gener-Portugal, Gina Marie	Harvey, David & Ann	Janzen, Mary	Lee, David
GHD Limited	Harvey, Dr. J Miln & Ann	Jensen, Bonny	Lee, Lorrie
Gibson, Lynn	Hastings & Aziz Consulting Engineers	Jensen, Noah & Bridget	Lee, Sue
Gillespie, Brian & Pamela	Hau, Cheuk & Lan	Jenuine Care Inc.	Leggett, Karen
Gillies, Dennis & Marlene	Hayward, Ruby	JKM Custom Fabricating Inc.	Lengyell, John
Gina's Closet Cancer Support Services	Heffner, William	Johnson, David & Susan	Leone, Dr. Karen
Gingrich, Fern	Heggie, Brian & Glenna	Johnson, Robert	Leon's Furniture Limited
Glithero, Justice Stephen & Joanne	Heidi C. Pflieger & Associates	Johnson Controls	Leppard, Joan
Goebel, Gordon & Sarah	Hempel, Monika	Johnston, Kirk	Lindhorst, Shirley
Goldstein, Mel & Joan	Henderson, Erin	Johnston, Rosemary	Linton, Joan
Goldsworthy, William & Roberta	Henderson, William	Jonas, Barbara	Lions Club of Galt Cambridge Inc.
Golletz, Ivan & Lynne	Hett, Sandra	Jones, Elizabeth	Lions Masonry
Goodes, Arlene	H-Four Logistics Inc.	Jones, Garvin & Janet	Lisi, Maurice & Grace
Gore Mutual Insurance Company Foundation	Hickey, James	Jylanne, Tim	Little, Roger & Sandra
Graham, Peter & Nancy	Hilborn, Allan	Kaieuteur Gold Jewelry Centre	Littlejohn, Joan
Graham Mathew Parkwood Computer Services	Hillier, Brett & Darlene	Kaine, Yvonne	LIUNA Local 837
Graham Mathew Professional Corporation	Hillier, Martha	Kaplan, Rick	Lloyd, Jack
Grapes, Dr. Bert & Margaret	Hinde, John & Eleanor	Kavanagh, Dr. James & Barbara	Loberito, Angelo & Monica
Great Canadian Holidays & Coaches Inc.	Hisey, Rachel	Kendall, Mark & Monique	Lockett, Dan & Sue
The Great-West Life Assurance Co	Hobbs, Pam	Kennedy, Barry & Gillian	Lockston, William & Joanne
Greb, Paul & Heidi	Hodgson, Carol	Kenny, Veronica	Lockwood, Ray
Green, Jean	Hogg Fuel & Supply Ltd.	Kesner, John & Mary	Logan, Sheila
Greenhorizons Group of Farms Ltd./Compact Sod	Hollinger, Denise	Keys, Alexander	Lone Wolf Technologies Inc.
Greentec International	Hoot, Fred	Kinzie, Larry & Carol	Loosemore, Daniel
Griffith, Neil & Janice	Hope, Douglas & Shirley	Kizhatil, Revi & Surekha Shenoy	Lopes, Christiano
	Horner, Jocelyn M.	Klaassen, Terry	Lyons, Todd & Darlene
	Howard, Paul & Sharon	Klinck, Beatrice	Lysohirka, Rob
	Howey, Ronald & Rae	Knox Preston Presbyterian Church	Lywood, Megan
	Howison, Dr. Robert & Janice	Koebel, Lynn	M & M Drive In Burger Ltd.
	Howlett, Muriel	Kolic, Terry	MacDonald, Helen
	Hube, Scott & Lisa	Kolyn Klahsen Medicine Professional Corporation	MacDougall, Kim
	Huber, Rolf & Janet	Konstantinidis, Michael	Macey, Sean & Ann Marie
	Hubert, David		Machado, Frank & Marie
	Huddleston, Ed		Maciel, Maria

MacInnes, Cheryl & Myles	Meridian Credit Union	OHE Consultants	Rajguru, Dr. Manjulata
MacKay, Lucy	Meridian Credit Union	Olesen, Anne	Rasmussen, Don
MacLeod, Dr. Heather	– Galt Branch	Olesen, Margaret	Ratthapakdee, Jerry
MacMillan, Douglas	Michael Lim Medicine	Olney, Larry & Anita	RBC
MacNaughton, Jonathan & Kendra	Professional Corporation	Ontario Hospital Association	RBC Foundation
MacNeil, John	Miles, Ian	Ontario Muslim Academy	RBC Global Asset Management
MacNeil, Patrick	Millar, Peter	Ontario Power Generation	RDK Concrete Cutting & Coring Inc.
MacNeil & Dodd Pharmacy Ltd.	Miller, Christine	Employees Charity Trust	Re/Max Real Estate Centre Inc.
Madeley-Carr, Sally	Miller, Margaret	OPSEU Local 238	ReAlign Health
Madok Manufacturing Ltd.	Miller, Ann & Robert	Organizacao do	Reay, Nancy
Maggs, Richard	Mills, Laurie & Vivien	Imperio Mariense	Redelinghuys, Dr. Johannes
Maidment, David & Karen	Minaker, Brian & Joanne	Osborn, Robert & Joan	Region of Waterloo
Maidment, Edward & Audrey	Miske, Ray & Wendy	Ostopovich, Arlene	Rego Realty Inc. Brokerage
Malleck, Michael & Melissa	Mitchell, Maureen	Ostrun, Zvonko & Tereza	Reid, Kevin
Mann, Paul & Marsha	Mitchell, Richard & Shirley	Otterbein, Derek & Ellen	Reid's Heritage Homes Trust
Mann, Mike	Mitchell, William	Oxborough, Stuart	Reis, Jose
Manson, John	Mitten, David & Pip	P & H Milling Group-Cambridge	Remax Real Estate Centre Inc.
Markow, Larry & Cheryl	MNP LLP	Pagliaroli, Valentino & Maria	Renwick, Gordon & Maggie
Marshall, Robert & Barbara	Mohammed, Alam	Palmer, Mike & Marilyn	Retired Teachers Ontario – Waterloo (RTO) Golf
Martin, Dr. Glynn	Mohammed, Sheri-Ann	Parke, Barbara	Revkor Cambridge Corporation
Martin, Hugh & Judy	Moniz, Antonio	Crump, Ernie & Marilyn	Rhee, Dr. Kunuk
Martin, Lynda	Moore, Donald & Christine	Parkinson-Crump	Ribeiro, Maria
Martin, Quinn	Moore, Robert & Barbara	Parkway Ford Sales (1996) Ltd.	Ribeiro, Pedro & Suzanne
Martin, Ray	Morgan, Marie	Parsons, Roy & Clara	Richter, Peter & Janet
Maser, Julian	Morin, George & Wendy	Paula White-Diamond	Ridgehill Ford Sales (1980) Ltd.
Matlow, Miller, Cummins, Thrasher LLP	Morris, Matt	Art Gallery	Ridsdale, Dr. David & Nancy
Matthews, Harold & Sheila	Mortley-Wood, Douglas	Pavey, Law LLP	Right at Home Canada
Matyas, Dr. Cynthia	Mosquito.Buzz	Payne, Marilyn	Ritchie, Edgar & Patricia C.
May, Edward	Moura, Celso	Peddle, Helen	Rockwell Automation Canadian Trust
McAnsh, Hazel	Moura, Joe	Pengelly, Mike & Janice	Rodd, Cayley
McClurkin, Robert H. (Bob)	MTD Products Ltd.	Pereira, Nicole	Rodgers, Diane
McCowan, Martha	MTE Consultants Inc.	Perriera, Humberto	Rodrigues, Linda
McCoy, Doreen	Mulder, Joseph	Persaud, Dwarka & Kioomarie	Rooke, Margaret
McCue, George & Gail	Murphy, Richard	Pessoa, Carlos & Maria	Rosenberg, Leonard
McDonald, Grant	Murray, James & Jean	Peto MacCallum Ltd.	Ross, Bernard & Joan
McDonald, John & Susan	Myska, Martin	Petras, William	Ross, Helen
McGarry, Fred & Kathryn	Myskiw, Michael	Pettitt, Robert & Gail	Rosy Recreational
McGlinchey, Dwayne & Cheryl	Myskiw, Yolanda	Petty, Shirley	Roth, Susanne
McIntyre, Norm & Martha	Nelco Mechanical Ltd.	Pitz, Erma	Rowland, Jeff
McKay, Allan S.	Nelson Aggregate/ Waynco Aggregate	Plad Properties Inc.	Royal Canadian Legion Branch 121
McKeen, Ian	Nestlé Waters Canada	Poll, Ellen	Royal Canadian Legion Branch 126
McKendrick, Bob	Network Sewer & Watermain Ltd.	Post, Barb	Royal Canadian Legion Branch 272
McLaren, Patricia	New Dundee Women's Institute	Post, Louise	Royal Canadian Legion Ladies Auxiliary Branch 271
McMurray, David & Dr. Josephine	Newport, Colin & Jackie	Poulton, Donald	RS Salt Supply
Medeiros, Don & Rose	Nguyen, Khanh	Powerline Logistics Inc.	Russell, Doreen
Melchers, Andrew & Nicola	Nichols, Michael	Precimac Tool Ltd.	Russell, Louise
Melo, Armando & Maria	Nichols, Ruth	Primemax Energy Inc.	Russell Investments Canada Ltd.
Melo, Jorge & Dilia	Nixon, Julie	Process Group Inc.	Rutherford, John & Marilyn
Mena, Jennifer	NJH Logistics	Prociw, Mike & Carolyn Crum	
Menezes, Gerry	Noble Wealth Financial Inc.	Puim, Maria	
Mercer, Edith	Novak, Ralph & Louise	Purdy, Doug	
Meredith, John & Laura	Novo, Maria	Puslinch Lake Golf Course Ltd.	
	O'Donovan, Sheila	Pyper, David & Gail Rhodey	
		Qureshi, Dr. Abdul	
		Rachevsky, Vic & Sandra	

S2E Technologies Inc.	Smith, Brad & Denise	The Fairmount Foundation	Wanklin, Tammy
Saad, Randy	Smith, Patricia	The Kitchener & Waterloo	Warren, Marie
Samuel Roll Form Group	Smith, Penelope	Community Foundation	Waterloo Region District
Sanders, Robert & Alison	Snider, Janice	The Kitchener & Waterloo	School Board
Sanderson, Richard	Sommers, Joyce	Community Foundation –	Watters, Lena
Sandhu, Kirpal & Surinder	Soucy, Raymond & Amber	John Pollock Family	Wayne, Rob
Sararus, Marilyn	Source Point Business Group	Foundation	Weatherbee, Elaine
Sarmazian Bros. Ltd.	Sousa, Maria	The Spaenaur	Weatherby, Daniel & Fran
Sauder, Jim	South Waterloo Naval	Philanthropy Fund	Weitsch, Wolfram
Saulnier, Basil	Veterans' Association	Thomas, David & Denise	Wellington Laboratories Inc.
Schaller, George	SP Plus	Thomas, Donald & Barbara	Welsand, Bruno
Schiedel, Allen	Sparling, Jane	Thompson, Jim & Marilyn	Welsh, Andrew
Schiedel Construction Inc.	Spencer Kyle, Mary Lou	Tim Hortons/Silvercreek	Wesley United Church
Schmidt, Gerard	Squires, Phil & Joan	Food Services Inc.	Westbrook, Rita
Schneider, Don & Junne	St. Andrew's Hespeler	Timleck, Sheila	Westcott, Diane
Schneider, William & Lynda	Athalie Read Group	Tokarz, Walter	Weston, Stephen
Schopf, Brian	St. Clements Church-CWL	Tomkinson, Elizabeth	Wheaton, Chester & Barbara
Schwarz, William & Nancy	Stacey, David & Lisa	Toner, Peter	Wheaton, Faye
Scotiabank	Stager, Charles	Torrance, William & Muriel	Wheeler, Julia
Scott, Brad	Stager, Jeff	Toyota Motor Manufacturing	Whetham, Roger & Audrey
Scott, Walter & Joanne	Staniszewski, Bronislawa	Canada Inc.	White, David
Seeley, Karen	Stantec Consulting Ltd.	Transchem Inc.	Whitfield, Harold & Patricia
Seiling, Ken & Kathryn	Star Legacy Inc.	Tremblay, Monique	Schiedel, Ron & Susan
Seldentuis, John & Margaret	Stauffer, Isabelle	Tri-City Wholesale Flooring Inc.	Wickens-Schiedel
Senior Homecare by Angels	Steed & Evans Limited	Trillium United Church – UCW	Wilk & Wilk Orthodontics
Septimatech Group Inc.	Steinman, Carol	Two Rivers Family Health	Wilkinson, Marilyn
Septodont of Canada Inc.	Stewart, Bryan	Team Inc.	Willets, Karen
Sersen, Ernie	Strite, Catherine	Uddin, Moin	Williams, Dr. Taryn
Seventh Day Adventist Church	Strubin, Heinrich & Esther	United Brotherhood of	Wilson, Allan
Shafir, Dr. Mark &	Stuart, Marjorie	Carpenters & Joiners-Local	Wilson, Charles
Michelle Preyde	Suckert, Elfriede	#784	Wilson, Geraldine
Shangas, Kathy	Suds Express Inc.	United Manufacturing	Wilson, Kathy
Sharp, Allison	Susiwala, Faisal & Natalie	Corporation	Winkler, Walter & Noreen
Sharp, Mary	Sutton, Greg & Christine	Van Domselaar-Frye, Janet	Witmer, Bruce & Pat
Shaver, Don & Catherine	Sutton, Rita	Vassalo & Associates	Witmer, Paul & Mary
Shebine Holdings Ltd.	Sweeney, Anne Marie	Private Wealth	Wohlgemut, Horst & Sharon
Sheffield Lions Club	Sweeney, Joan	Vaughn, Fred & Annette	Wood, Christine
Sheldon, Timothy	Szczepski, Racolta & Co LLP	Venugopal, Jane	Wood, Kaylee
Short, Lisa	Taggart, Lee	Vermeersch, Barry	Wood, Susan
Short, M.	Taylor, Gordon & Jennifer	Vertex Environmental Inc.	Woodcock, Alexander
Siegel, Kim	Taylor, Richard	Vorsteveld, Noela	Woolner, Harold & Ann
Sigel, Gordon & Darlene	TC Bizz	Vortex Freight Systems Inc.	Woynarski, Ronald & Janice
Silver Star	TD Bank Financial Group	Voss, Peter & Jennifer	Wragg, Paul
Society-Cambridge Chapter	TD Commercial Banking	Vrana, Charles & Jackie	Yach, Edgar & Rita
Sims, Ann	Team Vincent Motor Sports Inc.	VRM (Vanderwestern	Young, Natalie
Sims, W. & Joan	Tennenbaum, Erica	Rutherford Mantecon Inc.)	Yuzek, Matthew & Barbara
Sims, W.A. & Audrey	TerraCon Underground Ltd.	W. S. Nicholls Construction Inc.	Zero Environmental
Skillman, Dr. Jean	The Cambridge Store	Walden, Dave & Brenda	Zimic, Kevin & Antonette
Slade, Kenneth & Jayne	#2 Ltd. (A&W)	Walker, Bill & Linda	Zonta Club of K-W
Slee, Donald	The Colwyn & Jean Rich	Wall, Robert & Donna	Zoup! Fresh Soup Company
Slotegraaf, John & Pamela	Foundation	Wallace, Gordon	Zycom Technologies Inc.
Smith, Barry	The Corporation of The	Wallace, Lorne & Kelli	
Smith, Gord & Beth Marie	Township of North Dumfries	Walsh, Gerry	
Smith, Darren	The Cosmetic Surgery Clinic	Wanklin, Kim & Sandra	



WHY CHOOSING TO LEAVE A CMH GIFT IN HER WILL WAS IMPORTANT TO CARMAN CURTIS

For over five years, Carman Curtis has volunteered each week in Medical Day Care as a resource for people with cancer. She speaks to patients about the services available from HopeSpring – a partner organization for Cambridge Memorial Hospital. Recently, Carman let us know that she had named the hospital, along with several other organizations that were important to her, in her will.

“As a young girl, I remember the barbeques my father would have in our backyard to support his local Rotary Club. These early lessons in giving back taught me about volunteerism and charity and instilled in me values that I have lived my entire life.”

After living in Montreal and Vancouver as a young person, Carman has always appreciated the small town feel of Cambridge. She quickly built a network of friends including a few that worked at CMH. Their passion for the hospital inspired her to give originally. After having her daughter Leona at CMH 37 years ago and a more recent knee surgery, Carman was impressed with the care she received not only from the doctors and nurses but all of the staff who looked after her.

Carman speaks of all that she has to be grateful for in her life, noting with a smile **“I have lived comfortably and saved and invested well and now I'm in the position where I am able to give back. I give of my time and my treasure because I can and because I believe in supporting the community where I live and where I raised my family”.**





**We would love
to hear from you!**

**Cambridge Memorial
Hospital Foundation**

700 Coronation Blvd.
Cambridge, Ontario
N1R 3G2

T: 519-740-4966
F: 519-740-4971
E: foundation@cmh.org

Charitable Registration Number:
118826288RR0001

www.cmhfoundation.ca