

Donor Impact Report 2021

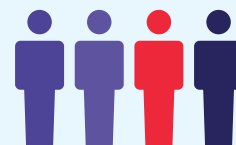
Vital Stats (2019-2020)



3,812
Donors



18,190
Gifts



1,304
Employees
295 Physicians
20 Midwives



540
Volunteers



41,305
Volunteer Hours



LISA SHORT, EXECUTIVE DIRECTOR
CAMBRIDGE MEMORIAL HOSPITAL
FOUNDATION

This is for all of us.

During a time of incredible change and adjustment, one thing that has remained constant is the support of our donors. Your support has taken us through, and will continue to get us through, challenging times.

In the coming months we look forward to sharing our Caring Programs with you. Caring Programs is an initiative to inspire ongoing support of our hospital as we highlight and raise awareness of the amazing programs, services and most importantly, people of CMH.

As you look at the numbers in this report, keep in mind that anything is possible with the help of our donors. This year once again, I hope you'll be inspired to continue to invest in the health of our community.

Thank you!

**Community dollars fund
100% of the equipment
in our hospital.**



SURGICAL PROGRAM

14,426
Day and Inpatient
Surgeries

287 Hip Replacements

David returned to an active lifestyle
after hip replacement surgeries.



WOMEN & CHILDREN'S
PROGRAM

1,405
Babies Born

**1,727 Patient Days
Acute Newborns**

Immediate action by staff and
necessary equipment saved the
lives of Alicia and Baby Cohen.



DIAGNOSTIC SERVICES
PROGRAM

105,168
Diagnostic
Images Taken

21,171 Ultrasounds

A CT scan, ultrasounds, and blood
work were required prior to Jayne's
emergency surgery.



EMERGENCY SERVICES
PROGRAM

51,546
Emergency
Department Visits

**11,282 Fracture
Clinic Visits**

Teagan and her mom, resting after
a visit to the fracture clinic.



MENTAL HEALTH &
ADDICTIONS PROGRAM

14,351
Outpatient Mental
Health Visits

**3,696 Mental Health Day Hospital
Attendance Days**

Brent's bi-polar disorder challenges
and recovery were supported
by the mental health team.



**Together, we
make it possible.**

Donate now

Call 519-740-4966 or visit
www.cmhfoundation.ca

CAMBRIDGE
MEMORIAL
HOSPITAL
FOUNDATION